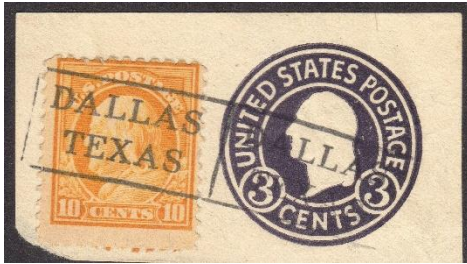


The State of Texas

Total listed Types and Towns: 950



The state is normally abbreviated, TEX., unless listed (Ie: TX)

The following are illustrations of Types referenced by the PIC Type Note in the listings.



? 0.1613



4.4544 TEXAS / FROM DEVINE, TEXAS



2.4546 T/S offset



3.75(44/45/45) REG. SECT. / DALLAS / TEXAS



0.4543 SS HS with bar A&B, aligned like SLR 7.4543



3.6153 2L HS Branch



0.4153 bar A&B



2.451



2.56 abbrev M'ntain

The following are examples of different styles found from Texas towns, with type numbers.





2.465



2.4653



2.466



2.466454



2.467



2.467005

TX



2.4674



2.4684



2.5214



2.5254



2.56



2.625



2.6\*29



2.64



2.64(5/9)

2.66



2.669



4.4113



4.4154



4.4173



4.4174



4.4183



4.4253



4.4254



4.4273



4.4513



4.4543



4.4544



4.45441



4.4562



4.4613





TEXAS March 19, 2019

Type	Note	Town	Note	Usage
2.46		ABBOTT,		1938
2.460005		ABBOTT, / TX		1968
2.4674		ABILENE	CQ	1908
1.1543		ACKERLY,		1938
2.460005		ADKINS, / TX		1959D
1.2273	PRO	ALAMO,		1938
2.46		ALAMO,		1937
1.4674		ALBA,		1938
2.46		ALBA,		1922
2.4294		ALICE,		1922
2.4674		ALICE	CQ	1922, 31
2.46741		ALICE	CQ	1912
4.4154		ALICE		1916
4.4174		ALICE		1931D
2.4283		ALPINE,		1926, 31, 38
2.44(5/9)		ALPINE		1938, 54
2.457		ALPINE		1948
2.46	CON	ALPINE,		1938
2.4662		ALPINE	CQ	1917
2.4674		ALPINE	CQ	1912
4.4154		ALPINE		1917, 19, 22, 23, 26

4.4174		ALPINE		1926
4.4662		ALPINE		1922
1.1644		ALTO,		1954, 59
2.46532		ALTO,		1938
1.1613	ASA,PIC	ALVARADO,		1926
4.4154		ALVIN		1922
4.4544		ALVIN		1931, 38
2.4694		ALVORD,		1932
2.46		AMARILLO	CQ	1908
2.460005		AMHERST, / TX		1968
2.4214		ARANSAS PASS,		1922,23
2.4644		ARANSAS PASS,		1926
2.5643		ARANSAS PASS	CQ	1917
2.4644		ARCHER CITY,		1914, 37
1.1162		ARLINGTON,		1926
2.425		ARLINGTON,		1922, 23
2.4263		ARLINGTON	CQ	1926
2.46		ARLINGTON	CQ	1934
2.4663		ARLINGTON,		1938
2.61(14/83)	ASF	ARLINGTON HEIGHTS	CQ	1919
2.42952		ARP,		1926
4.42542		ARP,	CQ	1926
2.4513		ASHERTON		1922
2.46		ASHERTON,		1922
2.4644		ASHERTON	CQ	1940
2.4254		ASPERMONT	CQ	1933
2.4674		ATHENS	CQ	1908
2.4263		ATLANTA,		1926, 31
2.46	CON	ATLANTA,		1945, 54
2.466454		ATLANTA,		1938
2.669		ATLANTA		1940
2.46		AUSTIN		1926
2.4674		AUSTIN,		1913
4.4283		AUSTIN		1917, 17DOC
4.4544		AUSTIN,		1917, 17D, 1919, 31D
2.4674		AVERY,		1913
2.460005		AXTELL, / TX		1984
2.46		BASTROP,		1922,23
2.4173		BAYTOWN		1938
4.4153		BEAUMONT		1922
4.4514		BEAUMONT		1917D, 18, 22, 26, 38
4.4514		BEAUMONT,		1923
4.45534		BEAUMONT,		1922

4.4614		BEAUMONT,		1917D, 18, 22, 23, 25SD, 26, 31
2.425		BECKVILLE	CQ	1926
2.460005		BEDFORD, / TX		1978
1.2544		BEEVILLE,		1926
2.425		BEEVILLE,		1922
2.4263		BEEVILLE,		1926, 38
2.46		BEEVILLE,		1926, 31, 32, 38, 40
2.46	CON	BEEVILLE,		1923
2.4653		BEEVILLE,		1938
4.4153		BEEVILLE		1917, 22
2.4544		BELLMEAD	CQ	1938
1.1543		BELLS,		1938
2.46		BELLS,		1938
4.4154		BENAVIDES		1922, 26
2.421		BIG SANDY	CQ	1932
2.4663		BIG SANDY	CQ	1938
2.669		BIG SANDY	CQ	1938
2.4243		BIG SPRINGS,		1938
2.4283		BISHOP,		1930, 31, 38, 39
2.4674		BISHOP,		1926
2.460005		BLANCO, / TX		1954
4.4154		BLANCO		1918, 26, 32, 33
2.46		BLESSING	CQ	1908
1.4572		BLOOMBURG		1938, 40
2.4243		BLOOMINGTON	CQ	1938
2.42		BOERNE		1913
2.4293		BOERNE,		1926, 31, 38
2.46		BOERNE		1913
2.460005		BOERNE, / TX		1968
2.469		BOERNE		1922, 26
2.4674		BOGATA	CQ	1926, 32
7.4643	DLR	BOGATA		1938
1.1644		BOOKER,		1954
2.460005		BORGER, / TX		1968
2.428		BOWIE	CQ	1913
2.467005		BOWIE, / TX		1963
2.4674		BOWIE		1926, 30, 32
2.4214		BRACKETTVILLE,		1922, 23
2.465		BRACKETTVILLE,		1926, 30
2.56		BRACKETTVILLE	CQ	1938
2.66		BRACKETTVILLE	CQ	1938
2.4264		BRADY,		1922
2.4664		BRADY,		1923, 25SD, 26, 31

2.469		BRADY,		1925SD
4.4543		BRADY	CQ	1917
2.66		BRECKENRIDGE	CQ	1917
2.46		BREMOND,		1932
2.4644		BREMOND,		1957
2.46	CON	BREMOND,		1926, 33
2.4653		BREMOND,		1938
2.66		BREMOND		1931D
2.4154		BRENHAM	CQ	1917
2.4543		BRENHAM,		1922
2.46		BRENHAM,		1925
4.4153		BRENHAM		1931
4.4154		BRENHAM		1922
7.4643	DLR	BRENHAM		1917, 18
2.46	CON	BROWNFIELD,		1954
2.465		BROWNFIELD	CQ	1926
2.466454		BROWNFIELD,		1938
2.4214		BROWNSVILLE,		1912, 14
4.4213		BROWNWOOD,		1917, 22
4.4513		BROWNWOOD,		1922
4.4613		BROWNWOOD		1922, 23, 26
2.4674		BRYAN,		1908
4.4153		BRYAN		1932
1.1153		BUCKHOLTS,		1938
7.4643	DLR	BUCKHOLTS		1917
2.4263		BUFFALO,		1938
2.46		BUFFALO	CQ	1922, 36
1.1254		BULLARD		1938
2.425	CON	BURKBURNETT	CQ	1917
4.4613		BURKBURNETT		1922
2.4653		BURLESON,		1938
4.4154		BURTON		1922
2.466454		CACTUS,		1954
2.4674		CADDO,		1931
4.41(54/74)		CADDO		1926
7.4643	DLR	CADDO		1917, 22
2.46		CALDWELL,		1922, 23
2.46		CALVERT	CQ	1922
2.4653		CALVERT,		1926
2.469		CALVERT		1939
2.64(5/9)		CAMP HULEN		1938, 40
2.4563		CAMP WOOD	CQ	1938
2.4153		CANADIAN,		1914



2.46		CANADIAN,		1917, 22, 31
1.1544		CANYON,		1941
2.4254		CANYON		1922
2.4643		CARRIZO SPRINGS	CQ	1922
2.66		CARRIZO SPRINGS,		1926
4.4174		CARRIZO SPRINGS		1926
2.64(5/9)		CAT SPRING		1938
2.460005		CEDAR HILL, / TX		1954
2.465605		CEDAR HILL / TX		1979
2.64(5/9)		CELESTE		1938
4.4154		CELESTE		1923
4.41(54/74)		CELESTE		1926
2.460005		CENTER POINT, / TX		1954
2.421		CENTERVILLE,		1926 39
2.42633		CENTERVILLE,		1938
2.46	CON	CENTERVILLE		1938
2.4243		CHAPEL HILL	CQ	1938
2.467005		CHICO, / TX		1963
2.62(5/9)		CHICO		1938
2.4214		CLARKSVILLE	CQ	1912
2.465		CLEVELAND,		1931
2.46	CON	CLIFTON,		1965
2.46		CLIFTON,		1925, 32
2.469		CLIFTON	CQ	1926
2.4653		CLINT,		1938
1.154201		CLYDE,		1926, 32
2.46	CON	COLEMAN,		1938
2.64(5/9)		COLEMAN	CQ	1958
2.4214		COLLEGEPORT,		1913
4.4514		COLLEGE STATION		1922
4.4614		COLLEGE STATION		1926
4.5543		COLLEGE STATION	STA	1923
2.625		COLORADO	CQ	1940
4.4153		COLORADO,		1922
4.4174		COLORADO		1931
4.4514		COLORADO		1926, 31, 32
4.4543		COLORADO,		1922, 23
2.64(5/9)		COLUMBUS	CQ	1938
2.46		COLUMBUS,		1922, 23, 26, 32
2.46	CON	COMANCHE	CQ	1954
2.425		COMFORT	CQ	1926, 38
7.45	SLR	COMMERCE,		1917
2.42832		COMO,		1925SD

1.1544		COOPER,	1926
4.4543		COPPERAS COVE	1932
2.66		CORPUS CHRISTI	1912
2.5214		CORPUS CHRISTI,	1912
4.4513		CORSICANA	CQ 1925
2.4263		COTULLA,	1931, 34
2.4274		COTULLA,	1930
2.46		COTULLA,	1926, 30, 37
2.46	CON	COTULLA,	1954
2.469		COTULLA	CQ 1940
2.4674		CRANE,	1932, 34
4.4154		CRANE	1922
2.56		CRANFILLS GAP,	1954
1.2644		CROCKETT,	1917
1.1274		CROSBY,	1954
1.2173		CROSBY,	1938
2.4214		CRYSTAL CITY,	1926, 37
4.4174		CRYSTAL CITY	1926
4.4543		CRYSTAL CITY	1923, 26
1.115		CUERO,	1922, 23
1.1173		CUERO,	1922
1.1544	CON	CUERO,	1917, 22
1.4564		CUERO	CQ 1922
1.157		CUERO,	1917
1.169	ASA	CUERO,	1917
2.4293		CUERO,	1926, 31, 37
2.4664		CUERO,	1923
1.164305		CUMBY,	1963
1.1644		CUMBY,	1954
2.46		CUSHING	CQ 1926
2.4213		DAISETTA,	1923
2.4263		DAISETTA,	1936
1.11253		DALLAS,	1922
1.1613		DALLAS	1925, 26, 29
1.1643		DALLAS, TX	1984
1.2543		DALLAS,	1984
2.46	CON	DALLAS,	1954, 61A
2.669		DALLAS	1938, 54, 61, 68
3.75(44/45/45)	PIC	DALLAS \\ REG. SECT.	1917, 19
4.4173	PRO	DALLAS	1916-17D, 22-23, 25SD-26, 28SD-34
4.4544		DALLAS	1922, 23, 26, 32
7.4644	SLR	DALLAS	1922
2.46	CON	DAWSON,	1954

1.519		DE KALB,		1926
2.5284		DE KALB,		1908
2.4293		DE LEON	CQ	1931
2.465		DE LEON,		1938
2.4674		DE LEON,		1908
2.4283		DEL RIO,		1926, 31
2.4293		DEL RIO,		1926, 31, 36, 38
2.46	CON	DEL RIO,		1926
4.45444	CON	DENNISON,		1917
2.4674		DENTON,		1913
4.4543		DESDEMONA	CQ	1922
4.4543		DETROIT		1917
2.4574	PIC	DEVINE,		1938
2.64(5/9)		DEVINE		1954
2.4653		DICKINSON,		1942
2.4663		DICKINSON	CQ	1938
2.46		DILLEY,		1931
2.4283		DIMMITT	CQ	1939
2.467		DODSON,		1960
2.4283		DONNA,		1926
2.4674		DONNA,		1922, 32
2.460005		DUNCANVILLE, / TX		1968
2.5254		EAGLE LAKE	CQ	1926
2.4214		EAGLE LAKE,		1922, 23
2.4544		EAGLE LAKE		1954
4.4513		EAGLE PASS		1926, 32
4.4613		EAGLE PASS,		1917, 26
2.5644		EAST BARNARD	CQ	1954
1.1254		EASTLAND,		1922
2.4254		EASTLAND	CQ	1917
2.46	CON	EDCOUCH,		1954
2.469		EDCOUCH	CQ	1929, 38
1.1543		EDDY,		1938
2.46		EDDY,		1938
2.4674		EDEN,		1937
2.46		EDINBURG,		1926
2.467005		EDINBURG, / TX		1961
1.1153		EDNA,		1922
1.4283		EDNA,		1932
2.4264		EDNA,		1922, 26
2.429		EDNA,		1926
2.44(5/9)		EDNA		1954
2.469		EDNA		1938, 43

4.4154		ELKHART		1926
4.4253		ELKHART		1922
2.46	PRO	EL CAMPO,		1926
2.4263		ELDORADO,		1931, 38
2.46	CON	ELDORADO,		1954
4.4274		ELDORADO		1926
2.46	CON	ELGIN,		1954
4.4153		ELGIN		1922
4.4153		EL PASO		1922, 26
4.4153		EL PASO,		1917, 22
4.4183		EL PASO,		1917
4.45434		EL PASO,		1917, 22
4.4544		EL PASO,		1922, 23, 24, 25SD, 26, 27
4.4643		EL PASO,		1914, 17, 18
4.4644		EL PASO		1922, 23, 31
2.4293		ELSA,		1938
2.44(5/9)		ELSA		1938
2.4653		FABENS,		1954
2.4674		FABENS	CQ	1922
1.2513		FAIRVIEW STATION	nSt, CQ	1931D
2.455		FALLS CITY	CQ	1922
2.4214		FARMERSVILLE,		1926, 38
2.461		FARMERSVILLE	CQ	1917
2.4254		FARWELL	CQ	1926
2.46	CON	FARWELL,		1954
2.669		FARWELL		1938
2.4214		FAYETTEVILLE,		1914, 26
1.1574		FERRIS	CQ	1926
2.46		FERRIS,		1938, 40, 43
2.465		FLATONIA,		1922, 23, 26
4.4544		FLATONIA		1936
2.46		FLINT,		1954
2.46		FLORENCE,		1913
2.4653		FLORESVILLE,		1926
2.64(5/9)		FLOYDADA		1938
4.4154		FLOYDADA		1922
2.4653		FORNEY,		1938
1.1183		FORT STOCKTON,		1926
2.461		FORT STOCKTON,		1926
2.4614	CON	FORT STOCKTON,		1954
2.46		FORT WORTH,		1938, 54
2.46	CON	FORT WORTH,		1963, 68
2.46	CON	FORT WORTH, / TX		1968

2.64(5/9)		FORT WORTH		1938
4.4613		FORT WORTH		1922, 26, 30, 31, 31D, 32
4.4174		FRANKLIN		1926, 30, 34
2.4653		FREDERICKSBURG,		1926, 30, 31, 32
2.48(14/55)		FREDERICKSBURG		1938
2.5214		FREDERICKSBURG	CQ	1914, 26
2.551		FREDERICKSBURG	CQ	1922, 23
2.56		FREDERICKSBURG,		1938
2.46	CON	FREEPORT,		1954
2.4663		FREEPORT,		1922, 26, 32
2.669		FREEPORT		1938, 39
2.4264		FREER,		1926
1.1644		FRIONA,		1961
2.4254		FRIONA	CQ	1926
2.466454		FRISCO,		1938, 54
1.42731		FROST	CQ	1922
2.46(14/74)		GAINESVILLE		1908
2.4574		GALVESTON	CQ	1912
4.4154		GALVESTON		1926
7.4643	DLR	GALVESTON		1917-18, 22, 25SD, 26, 30D-32
2.46	CON	GARLAND,		1954, 61
2.460005		GARLAND, / TX		1954
2.4254		GARRISON,		1923, 32
2.64(5/9)		GARRISON		1954
2.669		GARWOOD		1931D
2.4214		GATESVILLE,		1926
2.467005		GATESVILLE, / TX		1968
2.46		GEORGETOWN,		1922, 32
2.465		GEORGETOWN,		1926
1.4284		GEORGE WEST,		1938
2.46	CON	GEORGE WEST,		1954
2.46		GIDDINGS,		1922
2.46	CON	GIDDINGS,		1938
4.4643		GIDDINGS		1917, 22, 26, 30
1.4646		GILMER,		1926, 32
2.4283		GILMER,		1926, 30
2.4293		GILMER	CQ	1938
2.46		GILMER		1922
2.46	VAR	GILMER,		1922, 25SD
2.4674		GILMER,		1922, 26, 38
2.4214		GLADEWATER,		1923
2.4653		GLADEWATER,		1926, 31
2.4283		GOLIAD,		1926, 32, 38

2.4674		GOLIAD,		1922, 26
4.45141		GONZALES		1926, 30
2.4264		GOREE,		1932
1.1614		GORMAN,		1938
4.4254		GORMAN		1926
2.425		GRAHAM	CQ	1922
7.4643	DLR	GRAHAM		1926, 31, 37
1.56	CON	GRANBURY,		1938
2.4643		GRANBURY, / TX		1954
2.466254		GRANBURY,		1954, 68
1.7573		GRAND PRAIRIE		1989
2.460005		GRAND PRAIRIE, / TX		1968
2.5254		GRAND PRAIRIE,		1938
2.46		GRANGER,		1917
2.46	CON	GRANGER,		1938
2.64(5/9)		GRAPELAND		1954
2.46	CON	GRAPEVINE,		1954
2.64(5/9)		GRAPEVINE		1938
1.1514		GREENVILLE,		1928SD
1.1517		GREENVILLE,		1926
1.1544		GREENVILLE,		1917
7.4643	DLR	GREENVILLE		1917
2.46631		GREGORY	CQ	1933, 38, 40
2.4114		GROESBECK,		1926
1.1182		GROOM,		1938, 40
2.4674		GRUVER,		1936
1.1644		GUNTER,		1938, 54
1.2154		GUNTER,		1954
0.46434		GUNTER		1938, 54
2.4214		HALE CENTER	CQ	1938
2.64(5/9)		HALE CENTER	CQ	1938, 54
2.4214		HALLETTSVILLE,		1926
2.5214		HALLETTSVILLE,		1914
1.415		HALLSVILLE,		1930
2.4263		HAMILTON,		1938
1.2543		HAMLIN,		1938
2.4283		HAMLIN,		1922, 28
2.46		HAMLIN	CQ	1931
2.46	CON	HAMLIN,		1938
2.4674		HAMLIN	CQ	1926, 30, 34
0.4514		HANDLEY,		1938
1.1283		HARGILL,		1938
2.46	CON	HARGILL,		1954

1.1643	ASA	HARLINGEN,		1922
2.45		HARLINGEN	CQ	1925
2.460005		HARLINGEN / TX		1950
2.4674		HASKELL	CQ	1914
2.4283		HEARNE,		1937
2.4674		HEARNE,		1922
2.4214		HEBBRONVILLE,		1931
2.4243		HEBBRONVILLE	CQ	1926
2.425		HEBBRONVILLE,		1922, 23, 26
4.4154		HEBRONVILLE	CQ	1926
2.4614		HEMPSTEAD,		1914
2.4214		HENDERSON,		1923, 26, 31
2.4254		HENDERSON,		1926, 31
2.46		HENDERSON	CQ	1931
2.46		HENRIETTA,		1926
2.669		HENRIETTA,		1940
2.46		HEREFORD	CQ	1926
2.46	CON	HERMLEIGH,		1938
1.4174		HICO		1908
2.4284		HICO,		1926, 33
2.46	CON	HICO,		1938
2.46642		HICO	CQ	1940
2.425		HIGGINS,		1921
2.46		HIGGINS,		1932
0.4543	PIC	HIGGINS		1926, 31
2.669		HIGHLANDS		1938
1.2173		HILLSBORO,		1938
1.25		HILLSBORO,		1945
2.4283		HONDO,		1939
2.46		HONDO,		1912
4.4154		HONDO		1923, 26, 32
2.4544		HONEY GROVE,		1931
2.46	CON	HOOKS,		1954
1.2563		HOUSTON,		1911D
4.4153		HOUSTON		1922, 23, 26, 28, 28SD, 30-32
4.4254		HOUSTON		1916, 17, 23, 29A
4.4543		HOUSTON,		1914, 16-18, 22, 23, 25SD, 26, 26A
4.45432		HOUSTON,		1917, 22, 22BH, 23
4.4544		HOUSTON		1917, 17D
4.4544		HOUSTON,		1922, 23, 26
4.4614		HOUSTON		1922, 23, 26, 30, 32, 34A
4.4644		HOUSTON		1922, 23
2.46	CON	HOWE,		1938

2.46		HUBBARD	CQ	1932
2.4674		HUBBARD		1926
1.4154		HUMBLE,		1917
1.1613	ASA	HUMBLE,		1914
1.1674		HUMBLE,		1917
3.6154	PIC	HUMBLE, \\ MOONSHINE HILL BRANCH		1917
2.46		HUMBLE	CQ	1930, 31
2.466454		HUNT,		1938
4.4113		HUNTSVILLE,		1922, 23
4.4113		HUNTSVILLE		1922, 26
2.46	CON	HURST	CQ	1954
2.625		HURST		1949A
2.64(5/9)		HURST		1954
2.466454		HUTTO,		1938
1.469		IDALOU		1926
2.4263		INGLESIDE	CQ	1938
1.1544	ASF	IOLA,		1938, 54
2.469		IRAAN,		1926, 31
2.4283		ITALY,		1933
2.44(5/9)		ITALY		1954
2.469		ITALY		1938
2.425		ITASCA		1922, 25
2.46		ITASCA,		1922, 26, 38
2.4674		ITASCA,		1917D
2.469		ITASCA		1938
2.4283		JASPER,	CQ	1926
2.4674		JASPER,		1926
1.117301		JEWETT,		1940
0.4153	PIC	JEWETT,		1917, 22, 23
2.4214		JOHNSON CITY,		1926, 31, 38
2.460005		JOHNSON CITY, / TX		1968, 69
2.425		JUNCTION,		1926
2.4263		JUNCTION,		1926, 31
2.46		JUNCTION,		1922, 23, 26, 28SD, 38, 40
2.46		JUSTIN,		1926
2.64(5/9)		KARNES CITY		1954
2.4694		KATY		1938
2.460005		KEENE, / TX		1968
2.64(5/9)		KEMAH		1954
2.46		KERENS,		1922
2.451	PIC	KILDARE		1917
2.4263		KILGORE,		1926, 31



2.46		KILGORE,		1926, 32
2.4263		KINGSVILLE,		1931, 31D, 34, 38, 40
2.46	CON	KINGSVILLE,		1938, 54
2.64(5/9)		KINGSVILLE	CQ	1938
2.669		KINGSVILLE	CQ	1938
2.4243		KIRBYVILLE		1931
2.46		KRUM,		1922
2.4653		LACOSTE	CQ	1938
2.46		LA FERIA	CQ	1922
1.4594		LA GRANGE,		1937
2.46		LA GRANGE,		1938
2.465		LAGRANGE	CQ	1917
2.4653		LA GRANGE,		1938
2.467		LA GRANGE,		1931D, 38
2.4674		LAMESA	CQ	1926
4.4154		LAMESA		1922
4.4274		LAMESA	CQ	1926, 31
1.15		LAREDO,		1922
1.16		LAREDO,		1917D
2.44(5/9)		LAREDO		1938
2.46	CON	LAREDO,		1954
1.224305		LAVON, TX		1977
2.4674		LEGION	CQ	1926
2.469		LEGION	CQ	1923
2.46		LEVELLAND,		1922
2.4644		LEXINGTON	CQ	1914
2.4283		LIBERTY,		1940
2.46		LIBERTY,		1923
2.467005		LIBERTY, / TX		1954
2.4114		LINGLEVILLE	CQ	1918
4.4613		LIVINGSTON	CQ	1926, 31
2.428		LLANO		1922, 23
2.46		LLANO	CQ	1926
2.46	CON	LLANO,		1938
2.4653		LLANO,		1938
2.4674		LLANO,		1931, 38
2.669		LLANO		1938
1.1544	CON	LOCKHART,		1917, 22, 23, 25
2.4154		LOCKHART		1917
2.4562		LOCKHART		1917, 18
2.46	CON	LOCKNEY,		1954
2.4293		LOMETA,		1938
2.46		LOMETA,		1926, 32

1.1544	LORENZO,		1954
2.4254	LOS FRESNOS,		1923, 26
2.45(93/43)	LOTT		1917
2.46002	LOTT		1926
4.4174	LOTT		1926
2.46	LOUISE,		1923
4.43(83/44)	LUFKIN		1917, 18, 22
2.4674	LULING	CQ	1917
1.1563	LYFORD,		1938
2.46752	LYFORD	CQ	1938
2.4656	MABANK	CQ	1930
2.46	MALAKOFF,		1932
2.466454	MALAKOFF	CQ	1938
2.460005	MALAKOFF, / TX		1968
2.669	MALAKOFF		1938
2.4674	MANOR,		1923, 38
2.4283	MARBLE FALLS,		1938
2.4284	MARFA,		1917, 22
4.4154	MARFA		1922, 23, 26
1.2253	MARLIN,		1914, 17, 18, 22, 25, 30, 32
1.2284	MARLIN,		1922
2.46	MARLIN,		1926
4.4513	MARLINGTON,		1923
2.46	MARQUEZ	CQ	1926
1.1544	MART,		1938
2.44(5/9)	MART		1938
2.460005	MART, / TX		1968
2.4284	MASON	CQ	1922
2.4293	MASON,		1926, 40
2.44(5/9)	MASON		1938
2.46	MASON,		1923, 32, 34
2.4674	MASON,		1922, 26, 37, 38
2.4263	MATADOR,		1931
2.467	MATADOR,		1954
1.5514	MATAGORDA,		1954, 83
2.4644	MATHIS	CQ	1938
2.4664	MATHIS,		1922, 23, 26
2.669	MATHIS	CQ	1938
2.460005	MC ALLEN, / TX		1968
4.46434	MCALLEN,	SMc	1917, 22
2.4674	MCALLEN	SMc,CQ	1913
2.46	MCCAMEY	SMc,CQ	1923
2.46	MCDADE,	SMc	1926

2.460005		MCGREGOR / TX	CQ	1970
2.425		MCLEAN	SMc,CQ	1954
2.4293		MCLEAN,	SMc	1926, 31, 32
2.4644		MCLEAN,	SMc	1923
2.44(5/9)		MEDINA		1938
1.2543		MEGARGEL,		1938
4.4543		MEGARGEL	CQ	1922
2.464305		MELVIN, / TX		1983
2.4263		MEMPHIS,		1926, 31, 32
2.4674		MENARD	CQ	1922, 32
2.4694		MENARD,		1930, 38
4.4154		MENARD		1922, 23
1.1562		MERCEDES,		1914
2.415		MERCEDES,		1917
2.425		MERCEDES,		1923
2.46		MERCEDES	CQ	1923
2.625		MERIDIAN		1938
4.4174		MERIDIAN		1922
1.1183		MERKEL,		1922
2.4674		MERKEL	CQ	1926, 38
2.6694		MERKEL		1938
1.1574		MEXIA,		1921, 22
2.4284		MEXIA,		1914
2.46		MIAMI,		1954
2.4263		MIDLAND,		1926
2.44(14/45)		MIDLAND		1933
2.46		MIDLAND,		1926
2.460005		MIDLAND, / TX		1968
2.4674		MIDLAND	CQ	1908
2.4214		MIDLOTHIAN,		1932
2.46	CON	MIDLOTHIAN,		1954
2.465		MIDLOTHIAN,		1926, 32
2.5554		MIDLOTHIAN		1908, 14
2.66		MIDLOTHIAN,		1908, 14
7.4643	DLR	MILANO		1917, 26
2.4674		MILES,		1922, 32
2.64(5/9)		MILFORD	CQ	1954
7.4643	DLR	MILFORD		1922
2.425		MINEOLA,		1928
1.2543		MINERAL WELLS,		1984
4.4614		MINERAL WELLS		1926
4.5113		MINERAL WELLS,		1922
2.4214		MIRANDO CITY	CQ	1922, 26

2.4243		MIRANDO CITY,		1930
2.56		MIRANDO CITY,		1922, 23
2.46		MISSION	CQ	1922
2.46		MONAHAN	CQ	1926
2.4214		MONTGOMERY,		1922
1.1143		MOODY		1938
1.4154		MOODY		1922
2.46		MOODY,		1932
4.41(54/74)		MOODY		1916, 22, 26, 32
2.4674		MORAN,		1926
2.4544		MOULTON		1940
2.46		MOULTON,		1917
4.4174		MOULTON		1926, 32, 38
2.56		MOUNTAIN HOME,	PIC	1959
2.4263		MUENSTER,		1938
2.46		MUENSTER	CQ	1918
2.46	CON	MUENSTER,		1954
2.460005		MUENSTER, / TX		1959D
2.63(5/9)		MUENSTER		1938
2.4174		NACOGDOCHES	CQ	1922
2.46	CON	NADA,		1954
2.62(43/73)		NEW BRAUNFELS	CQ	1917
2.64(14/45)		NEW BRAUNFELS		1917
4.4543		NEW BRAUNFELS		1917D, 22, 23, 25, 26
4.62(13/73)		NEW BRAUNFELS	CQ	1923
2.466454		NEWGULF,		1938
2.4263		NEW ULM	CQ	1926
2.46		NEW ULM	CQ	1925
2.4264		NIXON,		1926
2.42932		NIXON	CQ	1938
2.46	CON	NIXON,		1938, 39, 54, 57
2.4283		NOCONA,		1931
2.46		NOCONA,		1922, 23, 25SD, 26, 31, 32
2.4674		NOCONA,		1931
2.66		NORMANGEE	CQ	1922
2.56		NORTH COWDEN,		1958
2.425		OAKWOOD	CQ	1918
2.4263		OAKWOOD,		1926
2.4283		ODESSA,		1926, 31, 32
2.46		O'DONNELL,		1926
2.4283		OLNEY	CQ	1937, 38A
2.4644		OLNEY,		1938
2.4664		OLNEY		1923

2.4674		OMAHA,		1936
2.4293		ORANGE,		1934
2.46		ORANGE,		1922, 23
2.4674		ORANGE,		1914
2.4263		PALACIOS,		1926, 31
2.46		PALACIOS,		1914
2.669		PALACIOS		1938
1.4182		PALESTINE,		1938
1.4282		PALESTINE,		1911, 38, 45
4.4114		PALESTINE		1917D, 22, 25SD
2.46		PAMPA,		1926
1.1573		PEARLAND,		1938
2.46	CON	PEARLAND,		1959D
2.425		PEARSALL,		1926
2.64(5/9)		PEARSALL		1938, 54
2.44(5/9)	ASA	PETTUS	CQ	1938
2.467005		PHARR, / TX		1968
4.4154		PHARR		1926
2.4263		PITTSBURG,		1926
2.56		PLAINVIEW,		1908
4.4213		PLAINVIEW,		1922, 23, 25, 26
4.4543		PLAINVIEW,		1923
4.4614		PLAINVIEW		1922, 23, 31
2.46		PLANO,		1926, 31, 32
2.4684		POOLVILLE	CQ	1938
2.66		PORT ARTHUR,		1908, 12, 14
2.4243		PORT ISABEL,		1938
2.460005		PORT ISABEL, / TX		1960
2.4214		PORT LAVACA,		1926
2.4264		POST,		1926
2.46	CON	POST,		1940
2.4694		POST		1917, 22, 32, 33, 38, 39, 54
2.460005		POTEET, / TX		1963
2.4644		POTH,		1968
4.41(54/74)		PROSPER		1926
2.46	CON	PYOTE,		1954
2.46		QUINLAN,		1926, 31, 33
2.469		QUINLAN,		1926
2.56		QUITMAN	CQ	1929
2.5214		RANDOLPH FIELD,		1931, 32
2.46		RANGER,		1926
2.4694		RANGER	CQ	1926
2.64(5/9)		RANKIN	CQ	1954

2.465		RAVENNA	CQ	1926
2.4214		RAYMONDVILLE,		1926, 30, 31, 38
2.64(5/9)		RAYMONDVILLE		1938
2.4544		REAGAN		1938
2.467		REAGAN	CQ	1983
2.625		REDWATER	CQ	1954
2.4263		REFUGIO,		1930, 38
2.46		RHOME,		1926
2.64(5/9)		RICHARDS	CQ	1938
2.460005		RICHARDSON, / TX		1968
2.4644		RICHARDSON	CQ	1954
1.4193		RICHLAND,		1938
2.467005		RICHMOND, / TX		1968
2.469		RIESEL		1938
2.4614		RIO GRANDE CITY	CQ	1938
2.4643		RIO GRANDE CITY,		1938, 40
2.56		RIO GRANDE CITY	CQ	1954
2.4283		RISING STAR	CQ	1938
2.461	CON	RISING STAR,		1971
2.46741		RIVIERA		1954
2.4263		ROBSTOWN,		1922, 26
2.45		ROBSTOWN,		1922
1.1543		ROBY,		1938, 68
2.46		ROCHELLE	CQ	1926
2.64(5/9)		ROCHELLE		1954
1.1562		ROCHESTER,		1926
2.4254		ROCKPORT	CQ	1922
2.4214		ROCKSPRINGS	CQ	1932
2.425		ROCKSPRINGS		1940
2.46	CON	ROCKWALL,		1954
2.4294		ROMA,		1922
2.4283		ROSCOE,		1926, 38
2.465		ROSEBUD,		1923, 38
2.469		ROSEBUD		1938, 39
2.56		ROSEBUD	CQ	1923
2.64(5/9)		ROSEBUD	CQ	1938
2.4254		ROSENBERG	CQ	1926, 31
2.46		ROSENBERG,		1926
1.1183		ROSSTON,		1938, 45
2.4296		ROTAN,	CQ	1926, 31, 38, 40
2.4254		ROUND ROCK,		1926, 32
2.625		ROUND ROCK		1940
1.1152		ROWENA,		1926

2.4263		ROWENA,		1926, 32
2.4674		ROXTON	CQ	1932
2.46	CON	ROYALTY,		1942, 48
2.46		ROYSE CITY,		1913
2.4654		ROYSE CITY,		1925SD
4.4174		ROYSE CITY		1932
4.4543		ROYSE CITY	CQ	1923
2.460005		RULE, / TX		1978
2.46		RUNGE,		1923, 26
2.6*29		RUSK	CQ	1917
1.461		SABINAL,		1918
2.4546	PIC	SABINAL		1938
2.46		SABINAL,		1922, 23, 26
4.4174		SABINAL		1930
1.1543	CON	SABINE PASS,		1954
2.46	CON	SAN ANGELO	CQ	1954
2.64(5/9)		SAN ANGELO		1938
2.46	CON	SAN ANTONIO,		1954, 68
2.5644		SAN ANTONIO,		1931D, 38, 54
2.625		SAN ANTONIO		1938. 54, 68
2.64(5/9)		SAN ANTONIO		1938, 53, 54
4.4113		SAN ANTONIO		1914, 17
4.4513		SAN ANTONIO,		1922, 23
0.41731		SAN ANTONIO,		1928
0.4514		SAN ANTONIO		1913
0.4613		SAN ANTONIO,		1926
2.4254		SANATORIUM,		1926, 32
2.4254		SANDERSON	CQ	1922, 26, 30, 38
2.46		SANDERSON,		1923, 26
2.4663		SANDERSON,		1922, 26
2.64(5/9)		SANDERSON		1938
4.4544		SANDERSON		1938
2.425		SAN DIEGO	CQ	1923
2.4663		SAN DIEGO	CQ	1938
2.46	CON	SANGER,		1954
2.465		SAN JUAN	CQ	1922, 23, 26
2.6694		SAN JUAN		1938
4.4174		SAN SABA		1926
2.425		SANTA ANNA,		1931
2.46		SANTA ANNA,		1922
2.460005		SANTA ANNA, / TX		1968
2.4653		SANTA ANNA,		1938
2.467005		SANTA ANNA, / TX		1968

2.469		SANTA ANNA,		1961
1.1544	ASF	SAVOY,		1938
2.48(9/5)		SAVOY		1954
2.4614		SCHULENBURG,		1911D
1.1644		SCOTLAND,		1984
1.554401		SCOTLAND		1983
2.4264		SEALY		1931, 38
2.46	CON	SEALY	CQ	1954
2.4674		SEALY		1950
1.115		SEGUIN,		1926
1.1544		SEGUIN,		1924
2.4283		SEGUIN,		1926, 31, 36
2.4293		SEGUIN	CQ	1931
2.45		SEGUIN,		1922, 26
2.46	CON	SEGUIN,		1938, 58
2.460005		SEGUIN / TX	CQ	1959D
2.46746		SEGUIN,		1926, 32
2.4694		SEGUIN		1926, 31, 37, 38
2.625		SEGUIN		1931D, 38, 54
2.6694		SEGUIN	CQ	1938
2.4243		SEMINARY HILL,	Sta	1938
4.4254		SEYMOUR		1917, 22
2.465		SHERMAN		1920, 21
4.4153		SHERMAN,		1914, 22, 23
4.4253	PRO	SHERMAN	CQ	1917D, 22, 26, 30, 30D, 31, 32
4.4543		SHERMAN,		1922
4.4154		SHINER		1922, 23, 26
4.4544		SHINER		1926, 31, 32, 38
1.1513		SHIRO,		1917, 22
1.1644		SHIRO,		1954
1.2283		SHIRO,		1938
2.4294		SHIRO,		1946
2.46		SILSBEE	CQ	1926
2.46		SINTON,		1926, 31
2.46002		SINTON,		1922, 23, 26
2.4674		SINTON	CQ	1922
4.4174		SINTON		1932
2.64(5/9)		SKELLYTOWN		1942, 45
1.1543		SKIDMORE,		1938
1.1573		SKIDMORE,		1938
2.4263		SKIDMORE,		1926
2.669		SMTHVILLE	CQ	1938
2.4653		SNYDER,		1938



2.466454		SNYDER	CQ	1938
2.4674		SNYDER		1913
2.469		SNYDER,		1923, 38
0.5543		SOMERSET		1922
2.4214		SOMERVILLE,		1922, 26
4.4174		SONORA		1932
4.4544		SONORA		1926
2.46		SOURLAKE	CQ	1923
2.5614		SOUTH SAN ANTONIO	CQ	1931, 38, 40
2.6644	CON	SOUTH SAN ANTONIO	CQ	1926, 38, 40
2.6664		SPEARMAN	CQ	1931
2.46	CON	SPRING,		1938
1.4644		SPUR,		1926
2.4694		SPUR		1938, 40
2.46902		SPUR	CQ	1931
1.156254		STAFFORD,		1954
2.46		STAMFORD,		1926
2.46	CON	STAMFORD,		1954, 59D
2.625		STAMFORD		1938, 54
2.460005		STANTON, / TX		1987
4.4544		STANTON		1937, 38
2.465		STOCKDALE,		1926, 38
4.4174		STRAWN		1931
2.4214		STREETMAN,		1926
4.48(13/83)		STREETMAN		1917, 18
4.4544		SWEET HOME		1928SD
2.455		SWEETWATER,		1922, 23
2.56		SWEET WATER,		1908
2.4274		TALCO	CQ	1926
2.469		TALCO		1938
2.4154		TANKERSLY	CQ	1914
1.1544		TAYLOR,		1932
2.4254		TAYLOR,		1914
2.4674		TAYLOR	CQ	1908
2.46		TAYLOR	CQ	1912, 17
2.46	CON	TEAGUE,		1926, 38
2.4674		TEAGUE	CQ	1932
4.4183		TEMPLE,		1923
4.4644		TEMPLE		1923
2.4254		TERRELL,		1925SD
2.4263		TERRELL,		1926
2.46		TERRELL	CQ	1926
4.41(54/74)		TERRELL		1925SD, 30

2.4544		TERRELL WELLS		1938
2.56		TEXAS CITY	CQ	1922
4.41(54/74)		TEXLINE		1926
2.669		TEXON		1938
4.4174		TEXON		1932
1.1643	ASA	THE GROVE,		1977
2.465		THORNDALE	CQ	1926
2.46		THORNTON	CQ	1908
2.46		TIMPSON,		1931
1.1544	ASF	TIOGA,		1954
2.46	CON	TOMBALL,		1954
2.425		TRENTON		1938
2.4663		TRINIDAD,		1940
2.46	CON	TROY,		1938
2.460005		TROY / TX		1954
2.4674		TYLER,		1908, 14
4.4543		VALENTINE		1917, 22
2.429		VAN,		1926
2.42932		VAN,		1932
2.46		VAN HORN,		1932
2.4644		VEGA,		1954
7.4643	DLR	VERNON		1917
2.46	CON	VIDOR,		1954
2.625		VIDOR		1954
1.115		WACO,		1926
1.2644		WACO,		1917D
4.4174		WACO		1923, 26
4.46(93/62)		WACO		1917, 22
7.4643	DLR	WACO		1917
2.46		WAELDER,		1926, 31, 38
2.4674		WALLIS	CQ	1932
2.625		WALLIS		1938
2.5614		WALNUT SPRINGS	CQ	1926
4.48(13/62)		WALNUT SPRINGS		1917
2.4254		WASCOM,		1912
4.41(54/74)		WAXAHACHIE		1922
2.4614		WEATHERFORD		1917
4.4113		WEATHERFORD,		1925SD
4.4613		WEATHERFORD		1932
2.460005		WEBSTER, / TX		1968
2.417		WEIMAR,		1922, 23
2.46		WEIMAR,		1926
2.46	CON	WEIMAR,		1954

4.4562		WEIMAR		1917
2.46002		WEST,		1922, 32
2.46532		WEST,		1938
4.41(54/74)		WEST		1922, 23, 26
2.56		WEST COLUMBIA,		1954
2.425		WESTHOFF,		1922
2.625		WESTHOFF	CQ	1954
2.4654		WHITE DEER,		1938
2.4214		WHITESBORO	CQ	1926
2.46		WHITNEY,		1922, 26
1.1242	ASA	WICHITA FALLS,		1917
1.1644		WICKERY,		1938
2.4214		WILLS POINT,		1926, 28SD
2.4263		WILLS POINT	CQ	1926
1.167		WINK,		1926
2.4663		WINNSBORO	CQ	1932
2.66(5/9)		WOLFE CITY		1938
2.46	CON	WOLFFORTH,		1961
2.460005		WOLFFORTH, / TX		1965
1.1644		WOODSON,		1983
1.464308		WYLIE, TX		1977
2.46		YOAKUM,		1922
2.4254		YORKTOWN	CQ	1917, 21, 26, 38
2.46		YORKTOWN	CQ	1922
7.4643	DLR	YORKTOWN		1926, 38, 54, 64
1.2543		ZAVALLA,		1938
2.4663		ZAVALLA	CQ	1938